



Connecting things
Hongdian

www.hongdian.com

H7710

4G external modem



Overview

H7710 4G external modem is a wireless DDN data communication product. Based on 2G/3G/4G wireless network, a wireless communication link is built for the your devices and data service center (platform), and you can transmit the user data through our modem.

Highlights



**Support 2G/3G/4G/5G and 1.8G
private electric wireless networks**



**Support TCP, UDP, DCUDP, SMS, DTU
and other data transmission solutions**

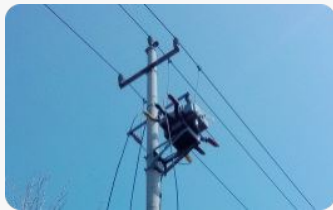
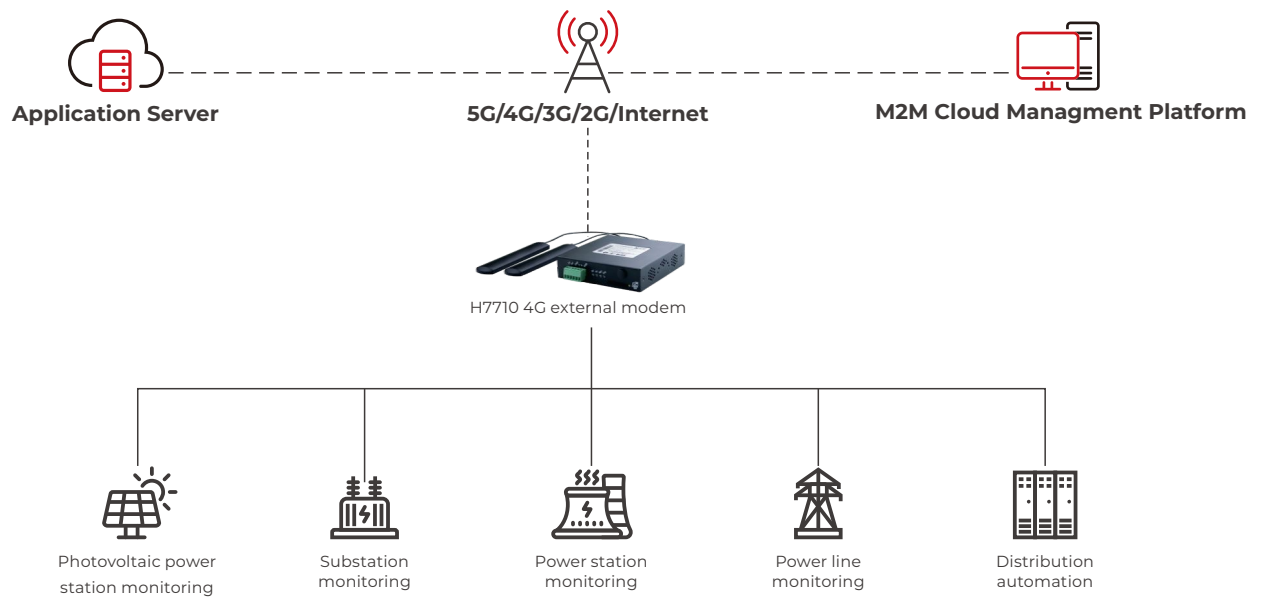


**Built-in watchdog with 7*24 hours
stable operation**



**Comply with EMC, CCC standard
design**

Topology diagram



Electric pole switch monitoring



FTU monitoring



Power line monitoring



Intelligent station area data acquisition

Features



Support multi-channel data center backup transmission and multi-data center synchronous transmission



In-depth optimization of TCP/IP protocols and wireless transport mechanisms



Real-time network analysis self-diagnosis, critical log storage, low-level packet interaction monitoring



Remote maintenance and upgrade management ensuring stable operation of devices in unattended environments

Specification

Network Format	
Cat. 1	LTE FDD: B1/B3/B5/B8, TD LTE: B34/B39/B40/B41
Interface	
Antenna Interface	4G/5G-1: SMA-K female, 4G/5G-2: SMA-K female
SIM	1.8V/3.0V
Serial Port	RS232/RS485
Ethernet Port	1* 10/100Mbps WAN/LAN, 1* 10/100Mbps LAN
Wi-Fi	Wi-Fi 2.4
Button	Reset
OTG	Micro-USB
Power Supply	
Operating voltage	+5V~+36V DC
Power Consumption	
Standby Power Consumption	Approx. 100mA@12V DC
Maximum Power Consumption	Approx. 350mA@12V DC
Other	
Weight	Approx. 300g
Size	100mm×99mm×23mm
Storage Temperature	-40 ~ +85 °C
Working Temperature	-30 ~ +70 °C
Relative Humidity	≤95%

Appearance

