

H3380

Dual-mode 5G vehicle-mounted integrated gateway



5G Cat. 16



4G LTE



3G UMTS



450 MHz



WLAN (optional)



GPS Glonass
(optional)



up to 6x SMA
(2x MIMO)



2 Ethernet Switch
(optional 4)



USB 2.0



RS-232



RS-485



Dual-SIM



2in/2out



Audio (optional)

Features

- Support 5G Sub6, 5GLAN, RedCap[®]

- Support 6xRS-485, 2xRS-232, 1xUSB

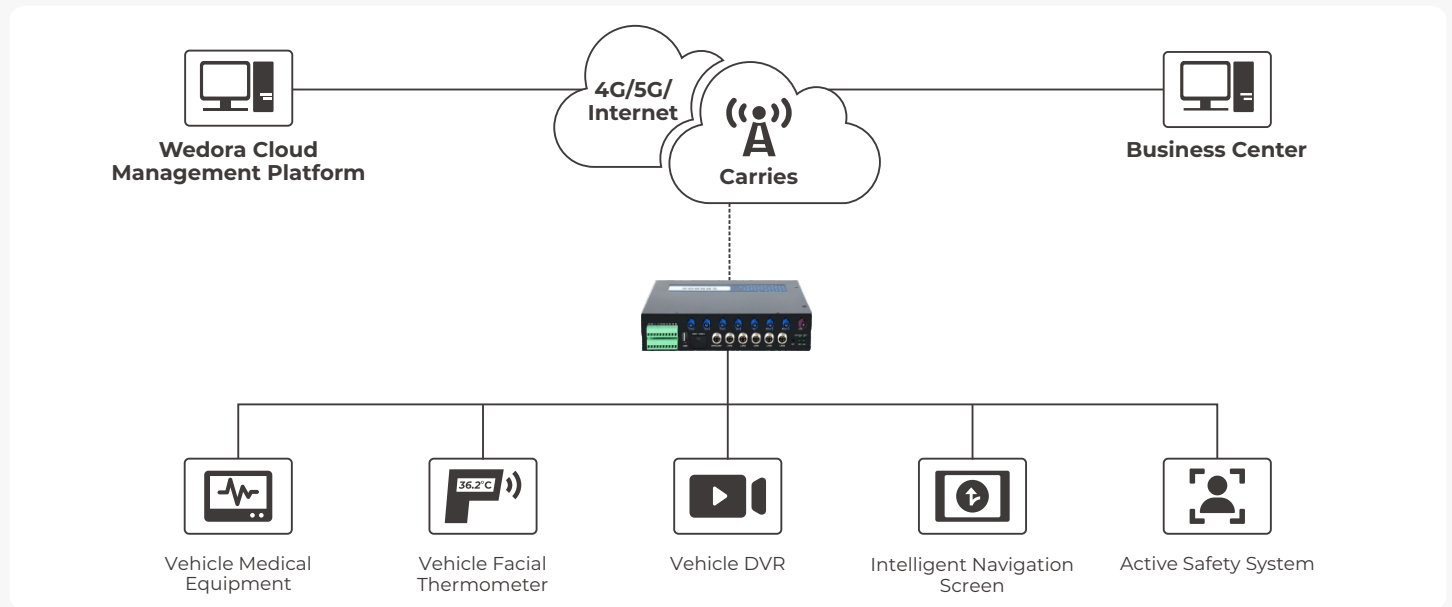
- Support Modbus TCP/RTU, MQTT and other mainstream communication protocols

- Support OPC, DLT645, DNP3.0 mainstream industrial protocols[®]

- Industrial grade standard design

- Widely used in vehicles and industrial sites

Topology Diagram



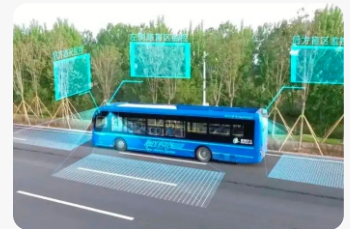
5G Smart Ambulance



5G Smart Environmental Sanitation Vehicle



5G Smart Logistics Vehicle



5G Smart Bus

Application Business



Advanced Dialing Capabilities

- Supports 5G Sub6, 5G LAN, and RedCap
- Supports 5G Multi-DNN Dialing and Network Slicing
- Supports 5G LAN and URLLC (Ultra-Reliable Low-Latency Communication)
- Enables Dual-Mode 5G for simultaneous transmission and reception or hot standby



Protocol Support

- Compatible with mainstream communication protocols such as Modbus TCP/RTU and MQTT
- Supports industrial protocols including OPC, DLT645, and DNP3.0
- Fully compatible with PLC brands such as Siemens, Omron, Panasonic, and Mitsubishi



VPN Features

- Supports VPN protocols including L2TP, PPTP, GRE, IPsec, and OpenVPN



Security Management

- NAT Firewall support
- Secure login with SSH
- Advanced filtering for IP, MAC, domain names, and ports



Remote Management

- Unified device management through Wedora Cloud
- Camera business management via the iScan Platform



Penetration Management

- Supports remote lower-level device penetration management through Wedora Cloud
- Enables unified networking without IT intervention for VPN setup via Wedora Cloud
- Provides cloud-based PLC automatic networking functionality through Wedora Cloud

Specification

Product model	H3380
Network format	5G+4G Dual Mode or Dual 5G Hot Standby
Module embedded	Default: Quectel RM500U-EA (M.2), Optional: RM520N (M.2) / EG912N-EN / EC2x / EG2x (mPCIe)
Interface	
Antenna	4×5G Antenna Interfaces (compatible with 4G, SMA-K female)
SIM Card Slots	2×SIM Card Slots (supports 1.8V/3.0V)
Ethernet Ports	LAN Ports: 5×10/100/1000 Mbps auto-negotiation WAN/LAN: 1×10/100/1000 Mbps auto-negotiation
USB Port	1×USB2.0 (for data storage or Wi-Fi extension)
20-Pin Terminal	RS485: 6 ports (configurable, 300–115200 bps) RS232: 2 ports (configurable, 300–115200 bps) CAN Interface: 1 port (customized model)
Button	1 RESET button (press and hold for more than 5 seconds to restore factory settings)
Storage	TF Card Slot (customized model)
WLAN	2.4 GHz optional
GNSS	optional with RM520N 5G-module or additional mPCIe LTE module
internal mPCIe slot	for additional LTE or 450MHz-module
Mobile Network Support	
Supported Networks	UMTS Bands: B1, B2, B5, B8 LTE Bands: B1/2/3/4/5/7/8/20/28 5G Bands: 5G NR NSA: n1/3/7/28/38/40/41/77/78 5G NR SA: n1/3/5/7/8/20/28/38/40/41/66/71*/77/78 MIMO Support DL 4x4 MIMO: n1/3/7/28/38/40/41/66/77/78 UL 2x2 MIMO: n38/40/41/77/78 DL 2x2 MIMO: n5/8/20/71*
Transmission Rates	5G Maximum Rates: ≤2 Gbps (DL) / ≤1 Gbps (UL)
Power Supply	
Operating voltage	+9V~+48V DC (with reverse polarity protection)
Power Consumption	
Idle State	Approx. 600 mA @ 12V DC (no data transmission)
Maximum	Approx. 1200 mA @ 12V DC
Typical	Approx. 900 mA @ 12V DC (data transmission)
Additional Features	
Weight	About 900g (Single mode)
Dimensions	220.0×142.0×47.0mm (excluding power, antenna connectors, and brackets)
Operating temperature	-30°C~+75°C
Storage temperature	-40°C~+85°C
Relative humidity	< 95% (no condensation)
Protection class	IP20
Operating System	OpenWRT 24 (fully programmable and configurable embedded Linux system)
Electromagnetic Compatibility	Conforms to EMC Directive 2014/30/EU (CE marking), Optional: ECE R10
Security	TPM 2.0, Secure Boot, Watchdog, Development complies with IEC 62443-4.1

Appearance

